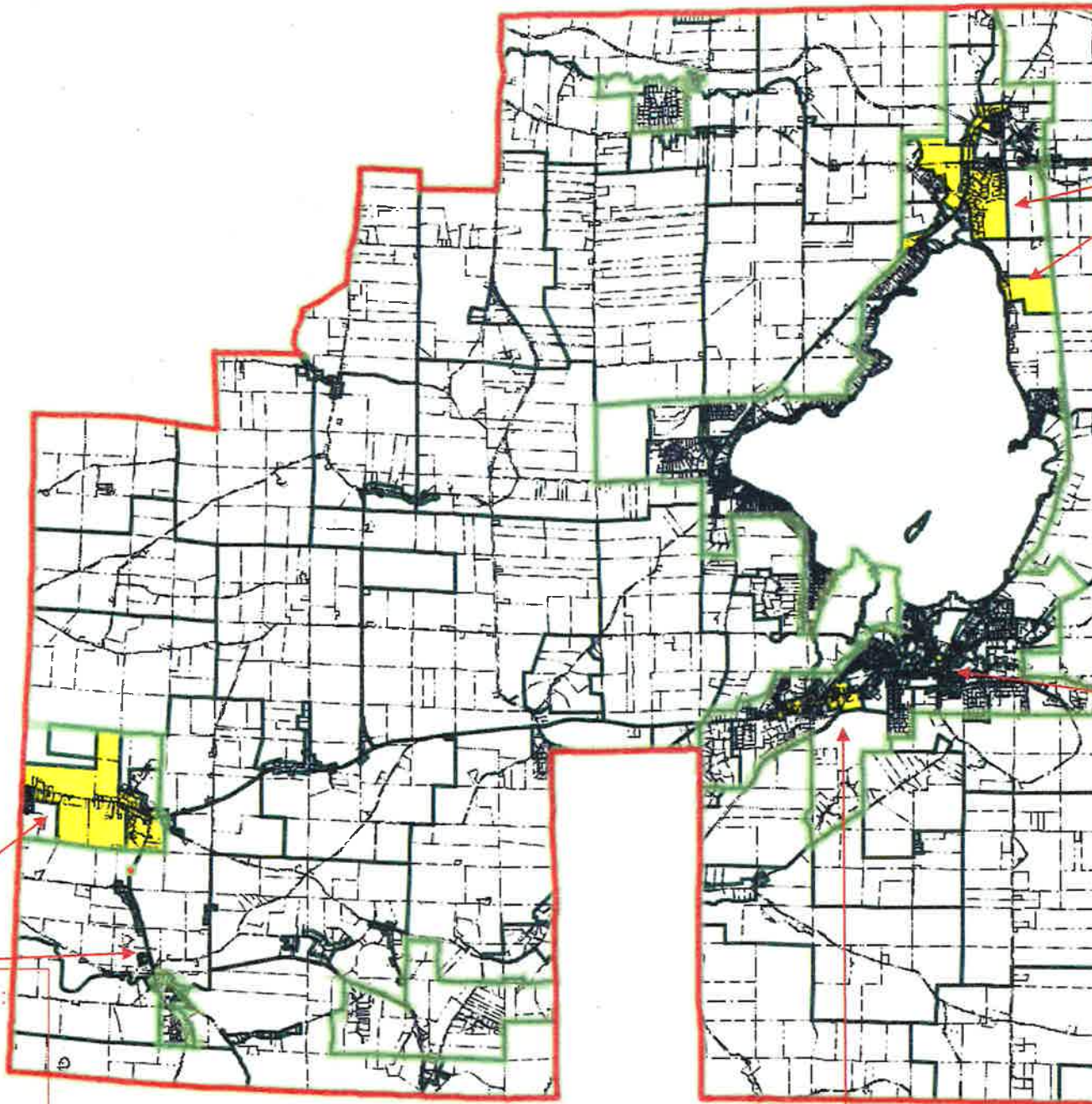




VILLE DE LAC-BROME
TOWN OF BROMÉ LAKE



Zones Foster:
UC-3-C15
AFB-4-D15
RBE-1-E16
RB-7-E15
RBE-3-F16

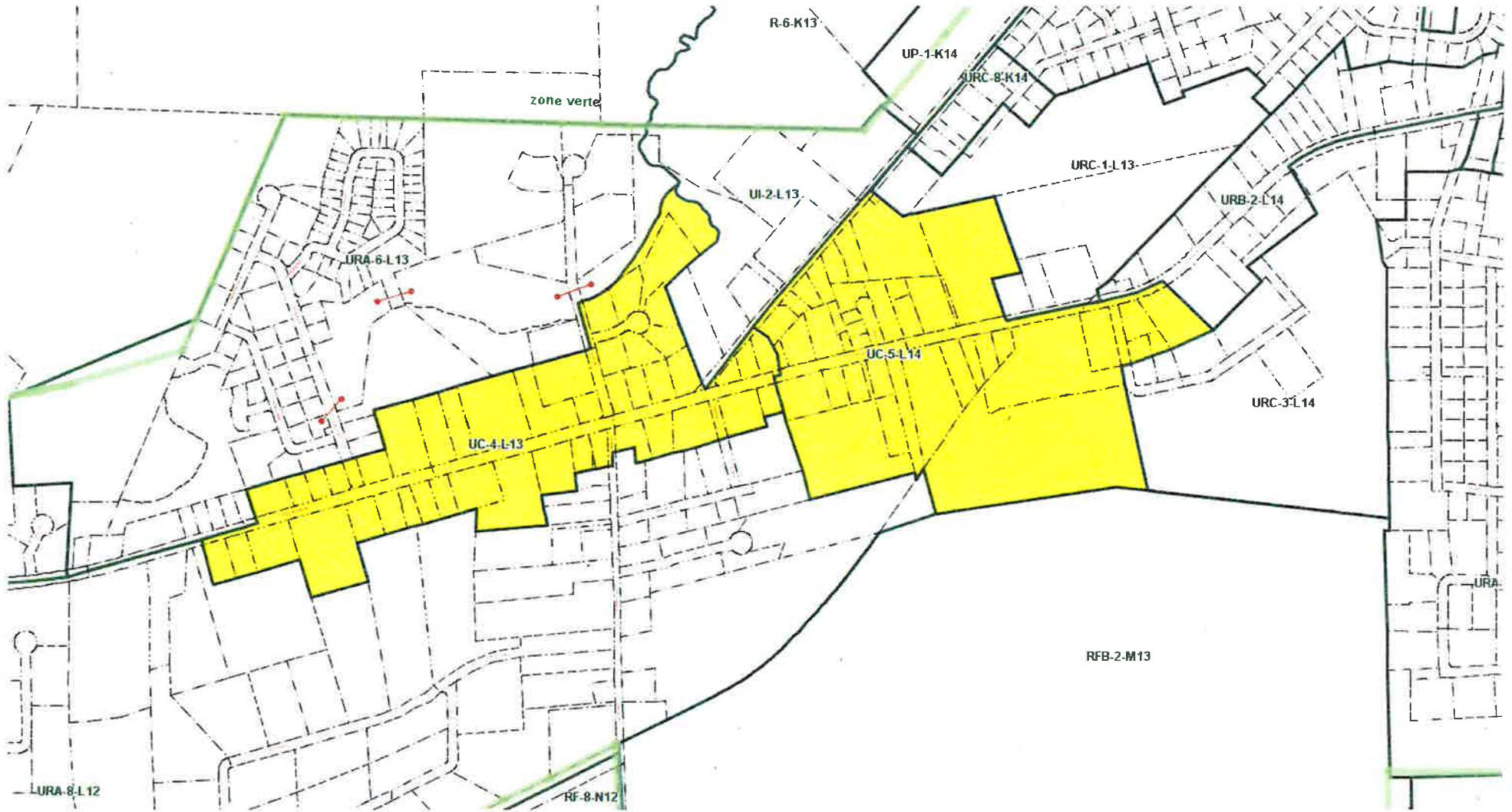
Zones Knowlton/Lakeside:
UCV-1-K15
URA-21-K15
UCV-4-K15
UCV-3-K15
UCV-5-K15
UCV-6-L15
UCV-7-L15

Zones West Brome:
UC-1-M2
UC-2-N3
AFV-1-P3

Zones East Hill et Knowlton/Victoria:
UC-4-L13
UC-5-L14



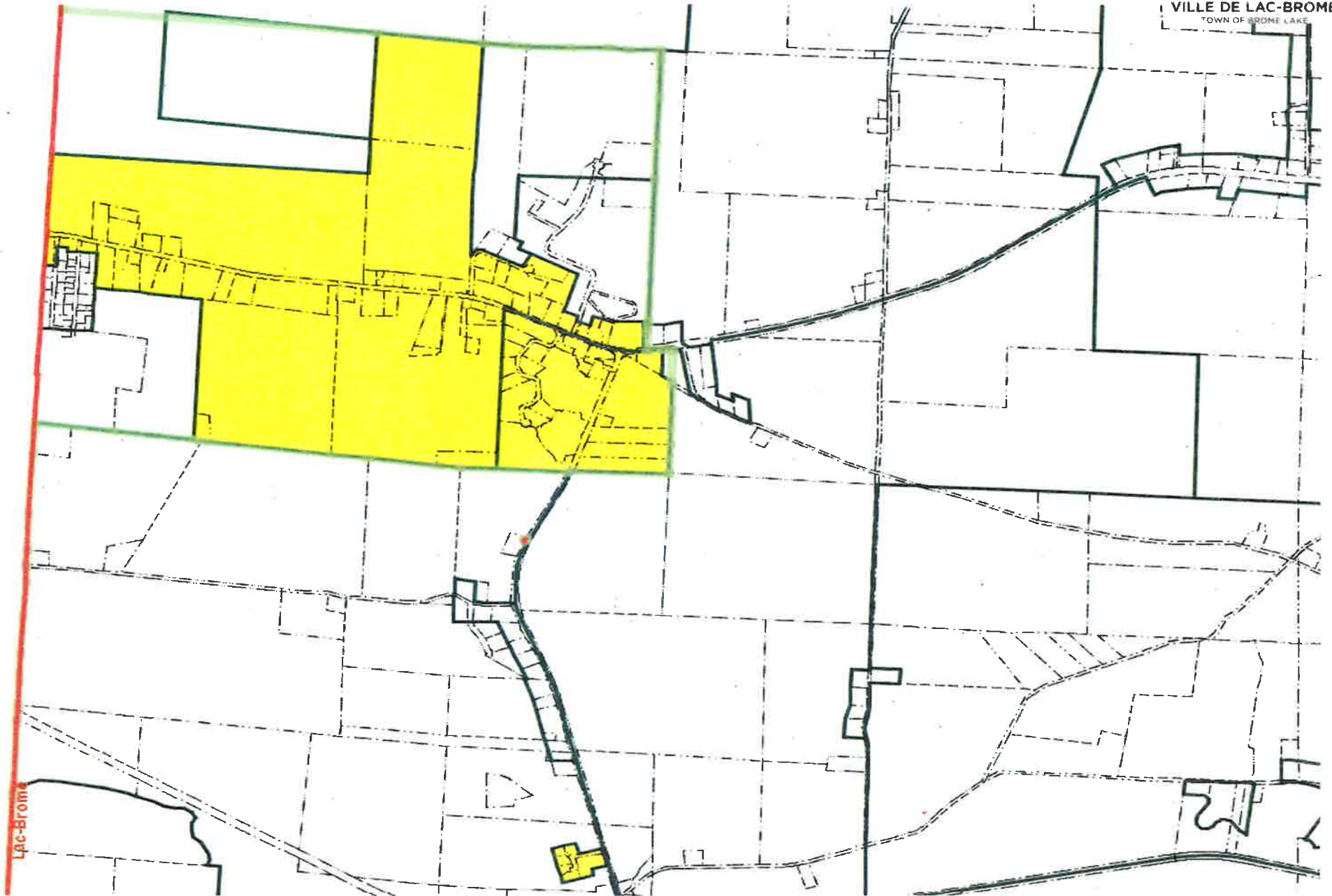
Zones East Hill et Knowlton/Victoria





Zones West Brome

VILLE DE LAC-BROME
TOWN OF BROME LAKE



Zones Foster



VILLE DE LAC-BROME
TOWN OF BROME LAKE

